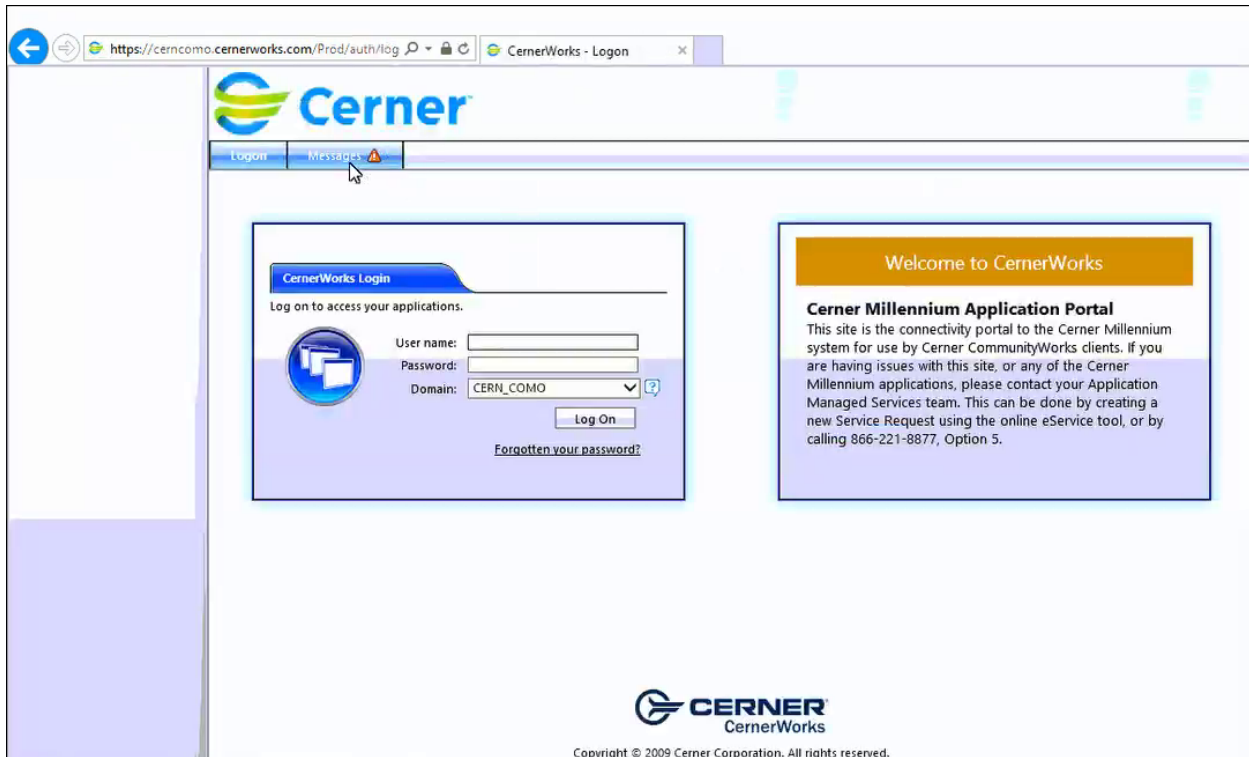


1. Using a web browser (Internet Explorer, Chrome, Firefox or Safari), type in www.mahealthcare.com and click on Employee Login in the upper right corner of the page. On the Employee Login page, select the link entitled “External Cerner Link”.



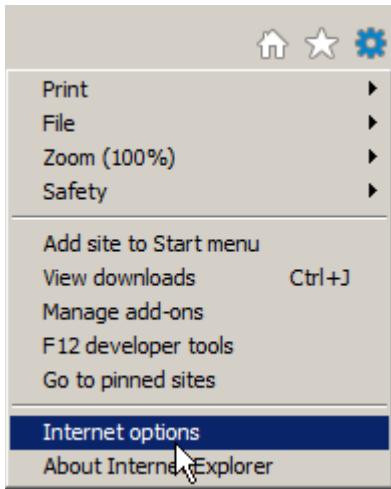
2. It will take you to the page below:



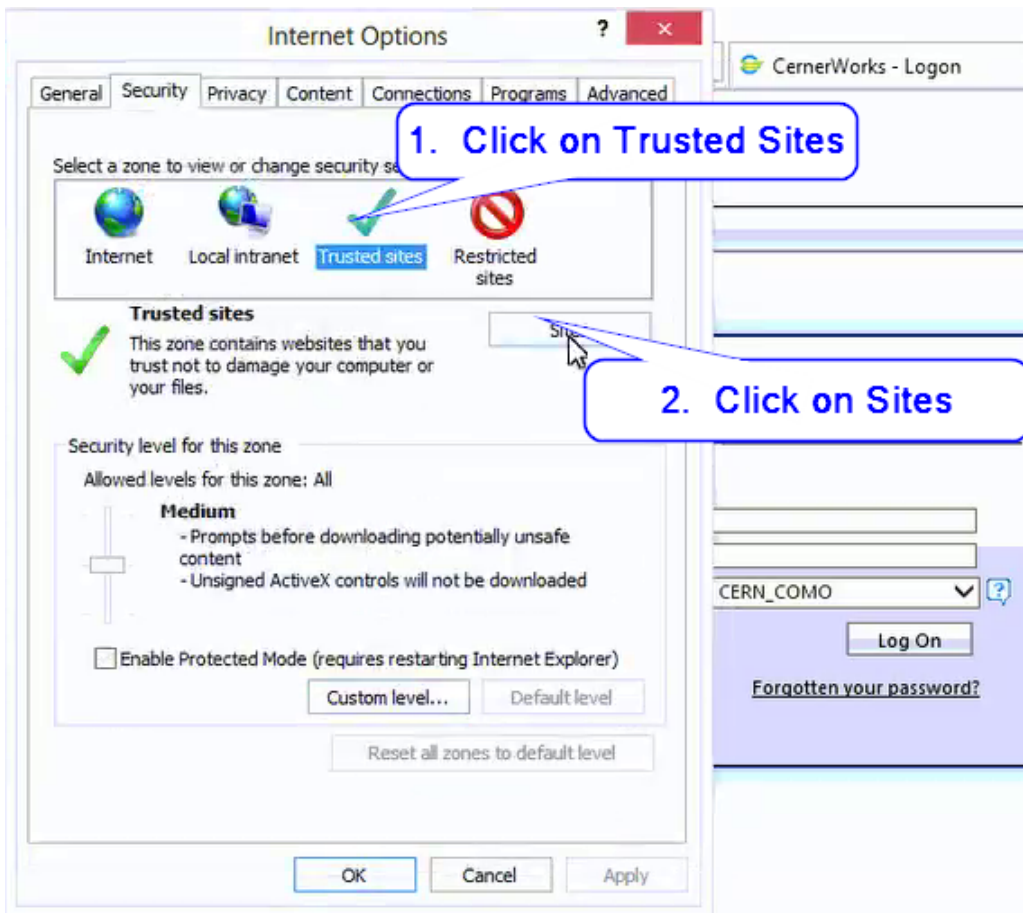
3. Click on the “Messages” tab to begin the setup process to use Cerner from a non-MA computer running a Windows Operating System:



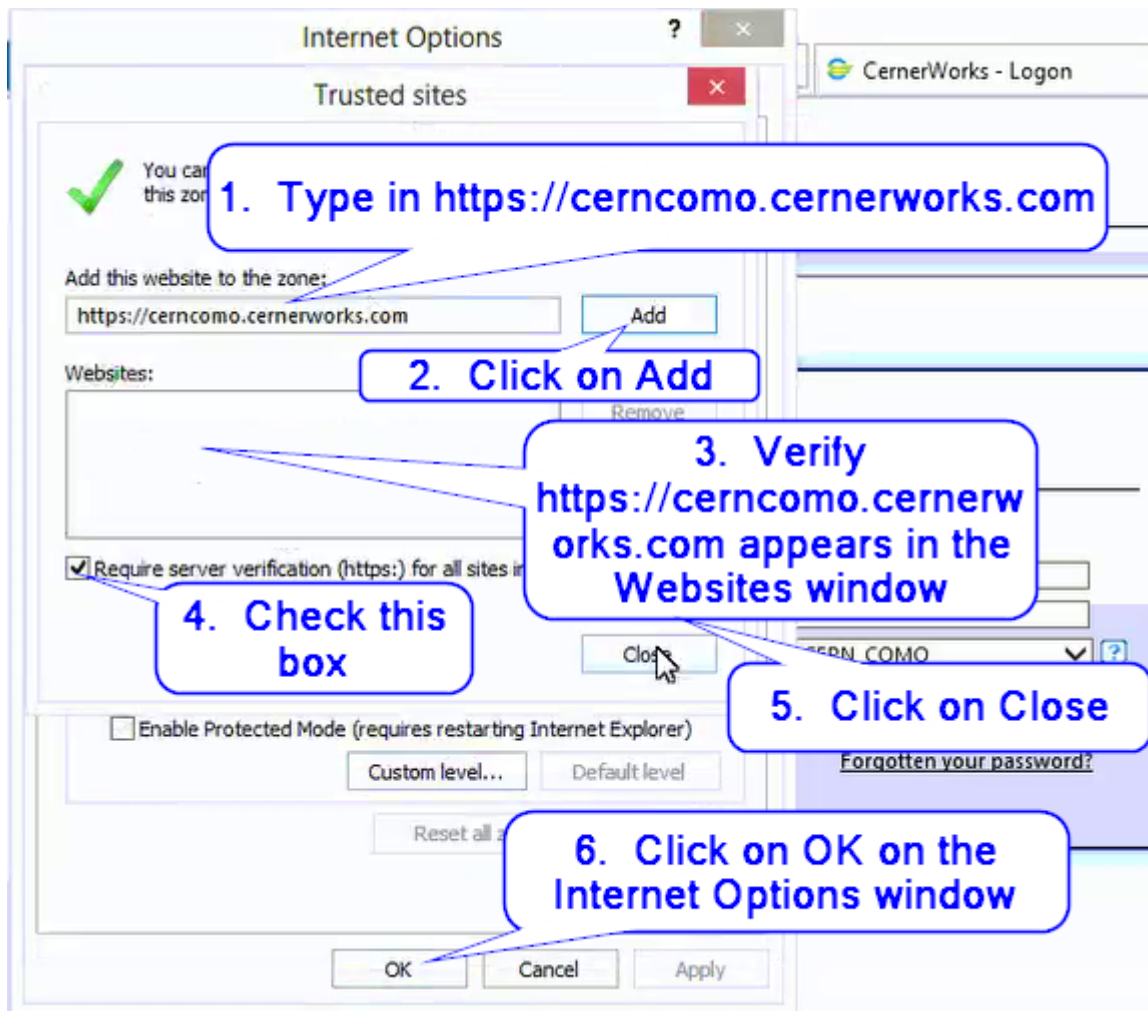
- 4. Users that are using Internet Explorer, please continue to step 5, otherwise continue to step 6.
- 5. **INTERNET EXPLORER** users will need to add the External Cerner Link to their Trusted Sites and here is how to do that:
 - a. Right click on the Settings button in the upper right hand corner of the browser and select Internet Options:



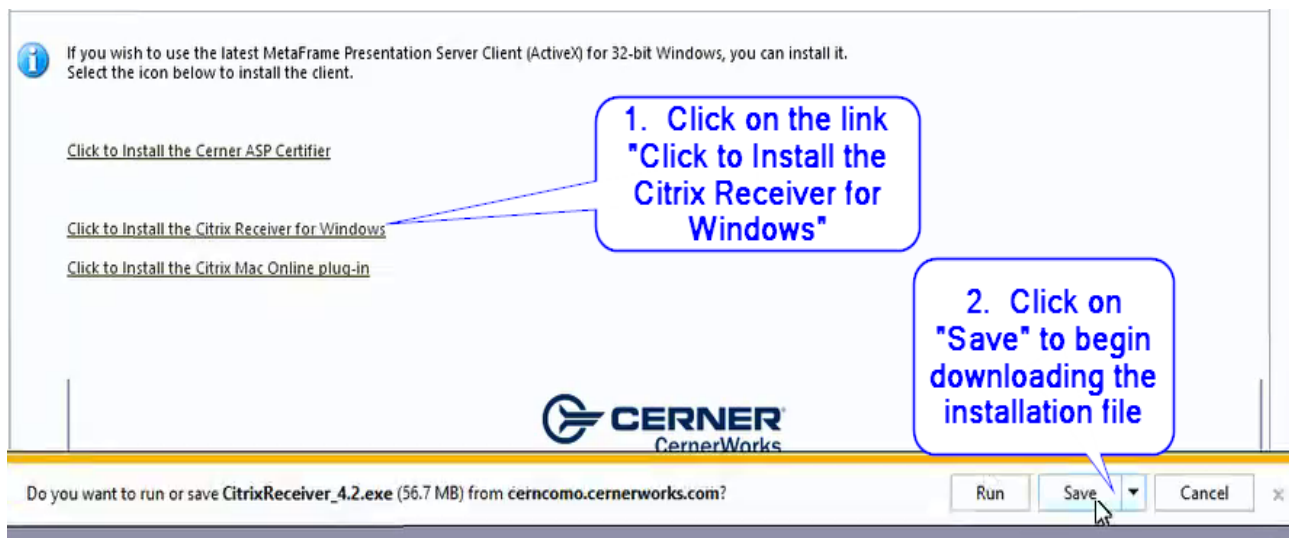
- b. Once the Internet Options window is open, select the Security tab followed by selecting Trusted Sites then click on the Sites button:



- c. Once the Trusted Sites window is open, perform the following steps to add the External Cerner Link:



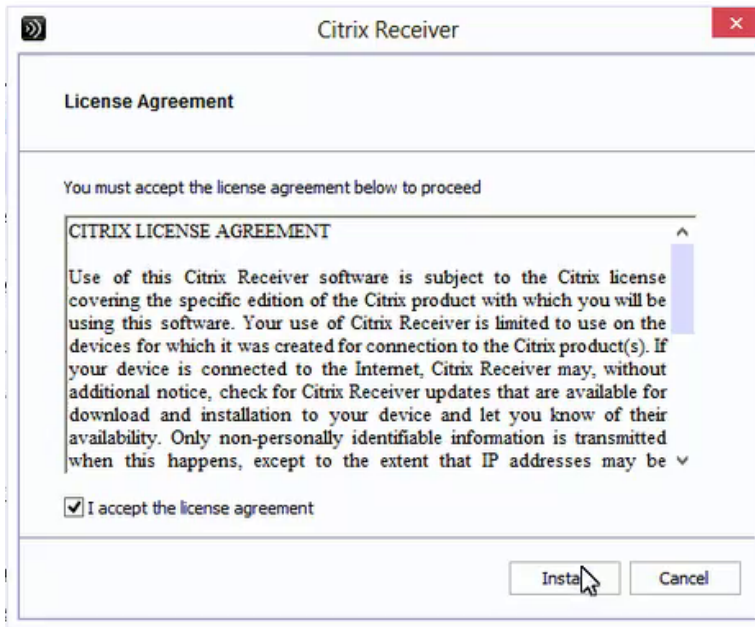
6. Follow the steps below to install the Citrix Receiver for Windows.



7. Follow the steps below to begin the install process for the Windows Citrix Receiver.



8. When prompted, check the “I accept the license agreement” box and Click Install.



9. Click Next.



10. When prompted, click Finish.



11. Click on the "LogOn" tab to take you back to the Cerner login screen for you to login with your Cerner credentials.

